

Anti-5T4 hlgG1 Antibody(825c)

Product information

GM-52191AB-10	10 µg
GM-52191AB-100	100 µg
GM-52191AB-1000	1 mg

Antibody Information

Species Reactivity	Human; Cynomolgus
Clone	825c
Source/Isotype	Monoclonal Human IgG1 /k
Application	Flow Cytometry
Specificity	Detects 5T4
Gene	TPBG
Other Names	5T4AG, M6P1, WAIF1
Gene ID	7162
Background	<p>Trophoblast glycoprotein, also known as TPBG, 5T4, Wnt-Activated Inhibitory Factor 1 or WAIF1, is a human protein encoded by a TPBG gene. 5T4 is an antigen expressed in a number of carcinomas. It is an N-glycosylated transmembrane 72 kDa glycoprotein containing eight leucine-rich repeats. 5T4 is often referred to as an oncofetal antigen due to its expression in foetal trophoblast (where it was first discovered) or trophoblast glycoprotein (TPBG). 5T4 is found in tumors including the colorectal, ovarian, and gastric. Its expression is used as a prognostic aid in these cases. It has very limited expression in normal tissue but is widespread in malignant tumours throughout their development. One study found that 5T4 was present in 85% of a cohort of 72 colorectal carcinomas and in 81% of a cohort of 27 gastric carcinomas. 5T4 is also the target of the cancer vaccine TroVax which is in clinical trials for the treatment of a range of different solid tumour types.</p>
Storage	Store at 2-8°C short term (1-2 weeks). Store at ≤ -20°C long term. Avoid repeated freeze-thaw.
Formulation	Phosphate-buffered solution, pH 7.2.
Endotoxin	< 1 EU/mg, determined by LAL gel clotting assay

Data Examples

Flow cytometry

H_TPBG(5T4) CHO-K1 Cell Line (Catalog # GM-C19130) was stained with Anti-5T4 hlgG1 Antibody(825c) (Catalog # GM-52191AB) or isotype control antibody, followed by anti-Human IgG APC-conjugated Secondary Antibody.

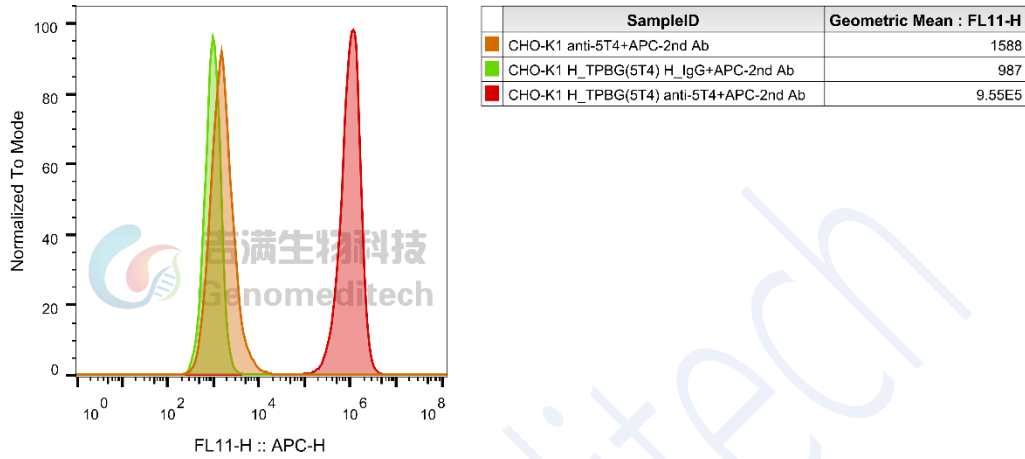


Fig 1. FACS

Flow cytometry

Cynomolgus_TPBG(5T4) CHO-K1 Cell Line (Catalog # GM-C19131) was stained with Anti-5T4 hlgG1 Antibody(825c) (Catalog # GM-52191AB) or isotype control antibody, followed by anti-Human IgG APC-conjugated Secondary Antibody.

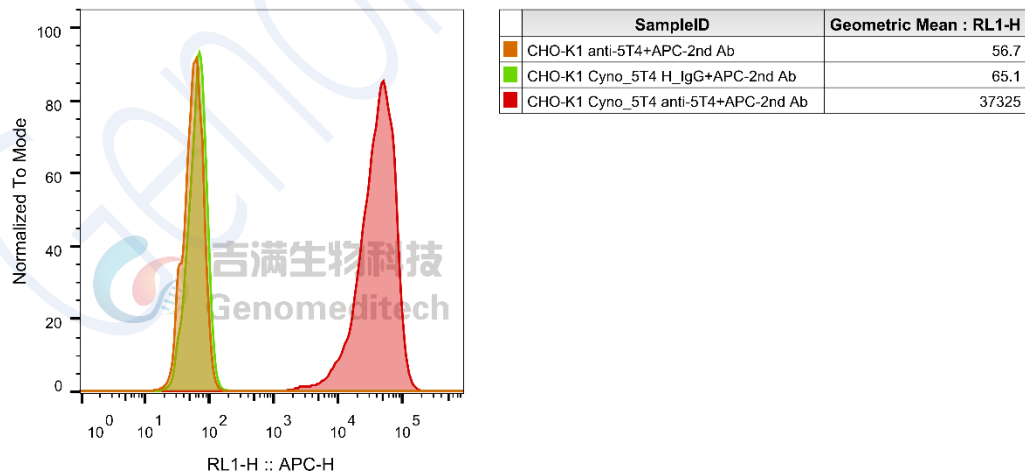


Fig 2. FACS